

Bore Gauges

SERIES 526 – Extra Small Hole Bore Gauge

- This gauge is designed to measure the diameters of very small holes. The radial displacement of the split-ball anvil is converted to axial displacement of the measuring rod, which is shown on the dial indicator.
- An optional stand (**215-120-10**) is available for efficient measurement of multiple small holes.



526-172-1

526-125

Specifications

Metric

Code No.	Range	Content of set					Probing depth
		Bore gauge	Dial indicator	Anvils	Pin point	Setting rings	
Graduation 0.001 mm							
526-172-1	0.95 - 1.55 mm	526-170-10	2109SB-10	5 pcs.	1 pc.	—	11.5 mm
526-162-1	1.50 - 4.00 mm	526-160-10		9 pcs.	2 pcs.	—	17.5, 22.5 mm
526-152-1	3.70 - 7.30 mm	526-150-10		7 pcs.	1 pc.	—	32 mm
526-124	7 - 10 mm	526-101		6 pcs.	—	—	
526-125	10 - 18 mm	526-102		8 pcs.	—	—	62 mm

Graduation 0.01 mm

526-173-1	0.95 - 1.55 mm	526-170-10	2046SB	5 pcs.	1 pc.	—	11.5 mm
526-163-1	1.50 - 4.00 mm	526-160-10		9 pcs.	2 pcs.	—	17.5, 22.5 mm
526-153-1	3.70 - 7.30 mm	526-150-10		7 pcs.	1 pc.	—	32 mm
526-126	7 - 10 mm	526-101		6 pcs.	—	—	
526-127	10 - 18 mm	526-102		8 pcs.	—	—	62 mm

Inch

Code No.	Range	Content of set					Probing depth
		Bore gauge	Dial indicator	Anvils	Pin point	Setting rings	
Graduation .0001"							
526-176-10	.037 - .061"	526-175-10	2923SB-10	5 pcs.	1 pc.	5 pcs.	.45"
526-166-10	.06 - .155"	526-165-10		9 pcs.	2 pcs.	9 pcs.	.68, .88"
526-156-10	.145 - .29"	526-155-10		7 pcs.	1 pc.	7 pcs.	1.25"
526-122	.3 - .4"	526-103		6 pcs.	—	—	
526-123	.4 - .7"	526-104		8 pcs.	—	—	2.42"

Graduation .0005"

526-119	.3 - .4"	526-103	2922SB	6 pcs.	—	—	1.25"
526-120	.4 - .7"	526-104		8 pcs.	—	—	2.42"

Technical Data

Accuracy

Range 0.95 - 10 mm:	4 μm
Range 10 - 18 mm:	6 μm
Range .037 - .4":	.00016"
Range .4 - .7":	.00024"
Repeatability:	2 μm / .00008"

Optional Accessory

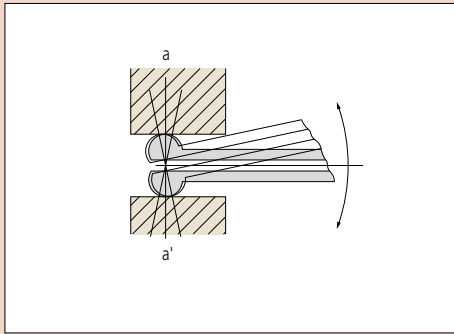
Code No.	Description
215-120-10	Stand for small holes



A heatshield prevents accuracy degradation due to hand heat during prolonged use.

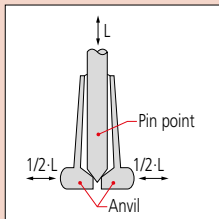


526-156-10



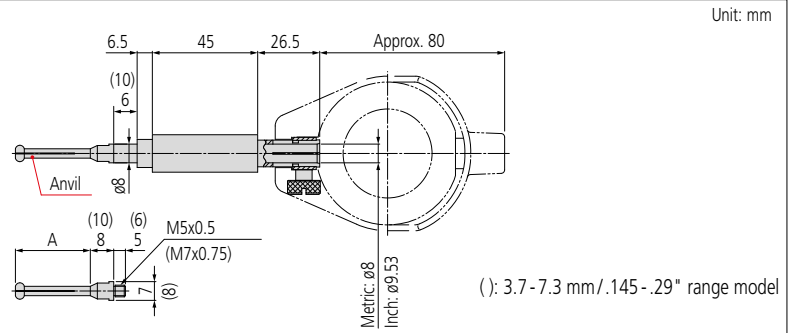
How to measure a hole diameter

The 526 series has a gauge head with high curvature to ensure accurate reading in use. Aligning the measuring direction of the gauge with the diameter (a-a') is achieved by rocking the gauge head within the hole as indicated, and the required diameter is the minimum value seen (at the reversal point) on the dial indicator.

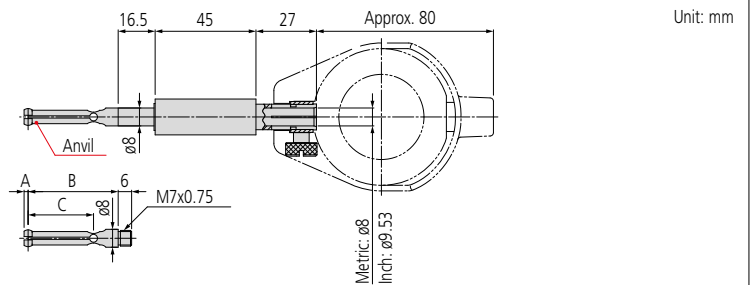


Measurement principle

Dimensions



Measuring range	Anvil			Setting ring mm/inch
	Marked No.	Measuring range	A	
0.95 - 1.55 mm / .037 - .061"	1.0	0.95 - 1.15 mm / .037 - .045"	11.5 mm / .45"	1.0 mm / .04"
	1.1	1.07 - 1.25 mm / .042 - .049"		1.1 mm / .045"
	1.2	1.17 - 1.35 mm / .046 - .053"		1.2 mm / .05"
	1.3	1.27 - 1.45 mm / .050 - .057"		1.3 mm / .055"
	1.4	1.37 - 1.55 mm / .054 - .061"		1.4 mm / .06"
1.50 - 4.00 mm / .60 - .155"	1.75	1.50 - 1.90 mm / .060 - .075"	17.5 mm / .68"	1.75 mm / .07"
	2.00	1.80 - 2.20 mm / .070 - .085"		2.00 mm / .08"
	2.25	2.05 - 2.45 mm / .080 - .095"		2.25 mm / .09"
	2.50	2.25 - 2.75 mm / .090 - .105"		2.50 mm / .10"
	2.75	2.50 - 3.00 mm / .100 - .115"	22.5 mm / .88"	2.75 mm / .11"
	3.00	2.75 - 3.25 mm / .110 - .125"		3.00 mm / .12"
	3.25	3.00 - 3.50 mm / .120 - .135"		3.25 mm / .13"
	3.50	3.25 - 3.75 mm / .130 - .145"		3.50 mm / .14"
3.70 - 7.30 mm / .145 - .29"	3.75	3.50 - 4.00 mm / .140 - .155"	32.0 mm / 1.25"	3.75 mm / .15"
	4.0	3.70 - 4.30 mm / .145 - .170"		4.0 mm / .16"
	4.5	4.20 - 4.80 mm / .165 - .190"		4.5 mm / .18"
	5.0	4.70 - 5.30 mm / .185 - .210"		5.0 mm / .20"
	5.5	5.20 - 5.80 mm / .205 - .230"		5.5 mm / .22"
	6.0	5.70 - 6.30 mm / .225 - .250"		6.0 mm / .24"
	6.5	6.20 - 6.80 mm / .245 - .270"		6.5 mm / .26"
7.0	6.70 - 7.30 mm / .265 - .290"	7.0 mm / .28"		



Measuring range	Anvil				
	Marked No.	Measuring range	A	B	C
7 - 10 mm / .3 - .4"	1	7.0 - 7.5 mm / .28 - .30"	1.8 mm / .07"	40 mm / 1.57"	29.2 mm / 1.15"
	2	7.5 - 8.0 mm / .28 - .30"			
	3	8.0 - 8.5 mm / .32 - .34"			
	4	8.5 - 9.0 mm / .34 - .36"			
	5	9.0 - 9.5 mm / .36 - .38"			
	6	9.5 - 10.0 mm / .38 - .40"			
10 - 18 mm / .4 - .7"	1	10 - 11 mm / .40 - .44"	2.1 mm / .08"	46 mm / 1.81"	38 mm / 1.50"
	2	11 - 12 mm / .44 - .48"			
	3	12 - 13 mm / .48 - .52"			
	4	13 - 14 mm / .52 - .56"			
	5	14 - 15 mm / .56 - .60"			
	6	15 - 16 mm / .60 - .64"			
	7	16 - 17 mm / .64 - .68"			
	8	17 - 18 mm / .68 - .72"			