

Stands

SERIES 7 – Magnetic Stands

- Mitutoyo's magnetic stands clamp to iron or steel surfaces with a strong force and are indispensable for temporarily mounting a dial test indicator (or dial indicator) onto a machine tool or fixture for general alignment applications.
- A V-grooved base on most models allows the stand to mount securely on cylindrical as well as flat surfaces.
- The magnetic clamping effect is conveniently switched on or off by a quarter turn of a lever (not available on 7014-10).



7010SN



7011SN



7014-10



7012-10



7033B

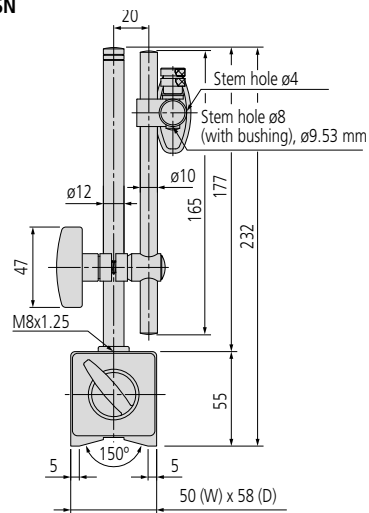
Specifications

Code No.	Description	Acceptable stem sizes	Dovetail groove	Remarks
7010SN	Magnetic stand	ø4 mm, ø8 mm, ø9.53 mm (3/8")	—	—
7011SN				With fine adjustment
7012-10	Flexible column stand	ø6 mm, ø8 mm, ø9.53 mm (3/8")	Provided	—
7014-10	Mini magnetic stand	ø6 mm, ø8 mm	Provided	Without magnet ON/OFF
7033B	Universal magnetic stand	ø6 mm, ø8 mm, ø9.53 mm (3/8")	Provided	With mechanical locking system

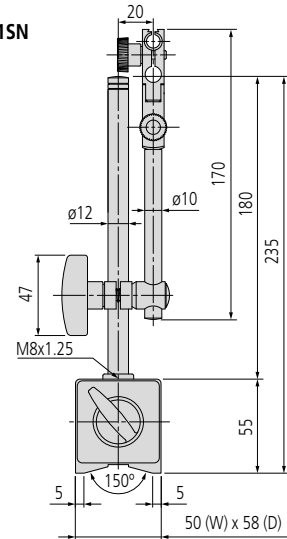
Dimensions

Unit: mm

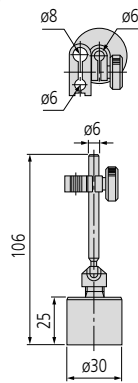
7010SN



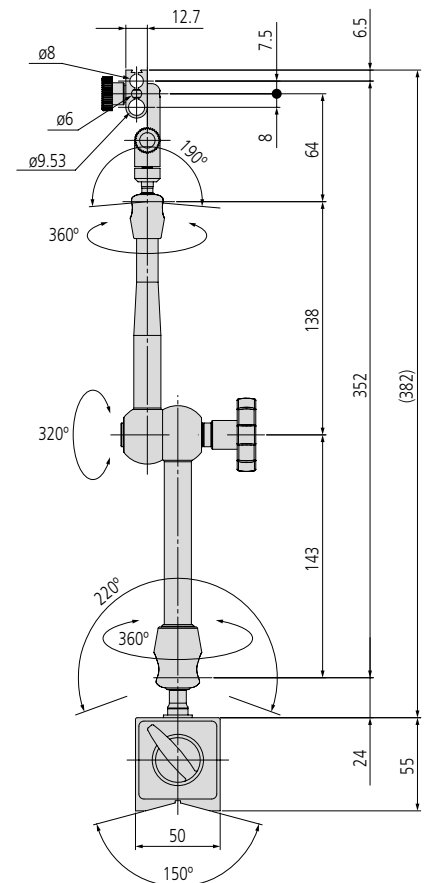
7011SN



7014-10



7033B



7012-10

